

# ➤ Platform for video-phenotyping (PVP) biocontrol agents and pests

14/12/2022

[silene.lartigue@inrae.fr](mailto:silene.lartigue@inrae.fr)

## ➤ The collective scientific facility (ISC)



Karine Hugot



**INRAE**

Platform for video-phenotyping (PVP) - ISC PlantBIOs, Institut Sophia Agrobiotech

14/12/2022

# > The collective scientific facility (ISC)



Karine Hugot

## ANALYTICAL PLATFORMS

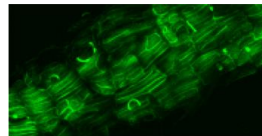
❖ Bioinformatic analysis



❖ Mass spectrometry  
SPR



❖ Microscopy



❖ Video-phenotyping



# ➤ The collective scientific facility (ISC)



Karine Hugot

## ANALYTICAL PLATFORMS

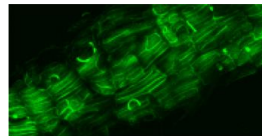
❖ Bioinformatic analysis



❖ Mass spectrometry  
SPR



❖ Microscopy



❖ Video-phenotyping



# > The collective scientific facility (ISC)



Karine Hugot

## ANALYTICAL PLATFORMS

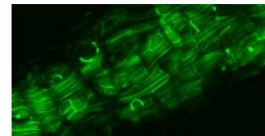
- ❖ Bioinformatic analysis



- ❖ Mass spectrometry  
SPR



- ❖ Microscopy



- ❖ Video-phenotyping



## COLLECTIONS

- ❖ Egg parasitoid insects



- ❖ Phytopathogen nematodes



# > The collective scientific facility (ISC)



Karine Hugot

## ANALYTICAL PLATFORMS

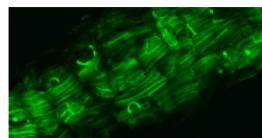
- ❖ Bioinformatic analysis



- ❖ Mass spectrometry  
SPR



- ❖ Microscopy



- ❖ Video-phenotyping



## COLLECTIONS

- ❖ Egg parasitoid insects



- ❖ Phytopatogen nematodes



## EXPERIMENTAL FACILITIES

*Controlled and confined environments*

- ❖ Greenhouses



- ❖ Climatic chambers

- Plant production



- Entomopolis



- PheHome



© K. Hugot

# > The collective scientific facility (ISC)



Karine Hugot

## ANALYTICAL PLATFORMS

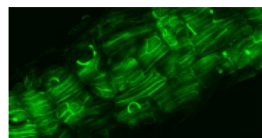
- ❖ Bioinformatic analysis



- ❖ Mass spectrometry  
SPR



- ❖ Microscopy



- ❖ Video-phenotyping



## COLLECTIONS

- ❖ Egg parasitoid insects



- ❖ Phytopatogen nematodes



## EXPERIMENTAL FACILITIES

*Controlled and confined environments*

- ❖ Greenhouses



- ❖ Climatic chambers

- Plant production



- Entomopolis



- PheHome



© K. Hugot

# ➤ The collective scientific facility (ISC)



Karine Hugot

## ANALYTICAL PLATFORMS

❖ Bioinformatic analysis



❖ Mass spectrometry  
SPR



❖ Microscopy



❖ Video-phenotyping



## COLLECTIONS

❖ Egg parasitoid insects



❖ Phytopathogen nem



## EXPERIMENTAL FACILITIES

*Controlled and confined environments*

❖ Greenhouses



❖ Climatic chambers

➤ Plant production



➤ Entomopolis



➤ PheHome



© K. Hugot



## ➤ A platform for high-throughput video-phenotyping

Developing and providing facilities and expertise for video-phenotyping

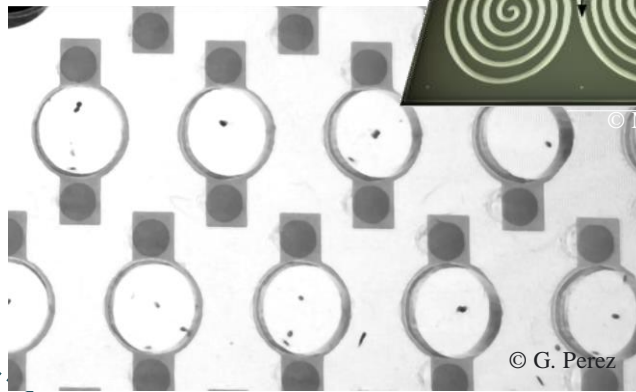


## ➤ A platform for high-throughput video-phenotyping

Developing and providing facilities and expertise for video-phenotyping

Experimental designs

Telecom  
Valley | SOFAB



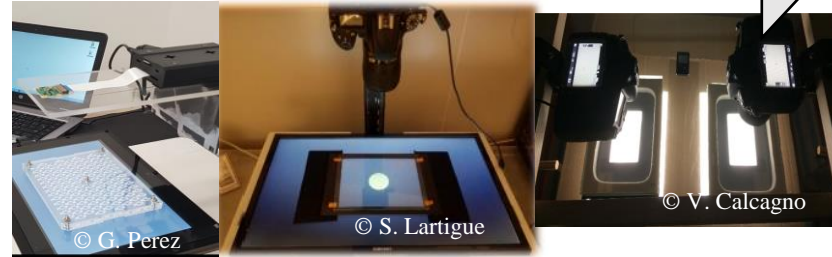
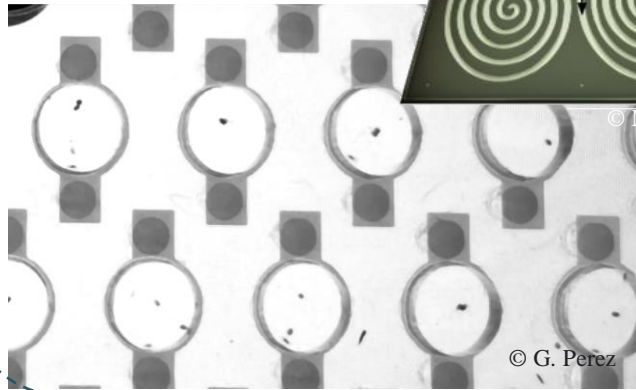
# ➤ A platform for high-throughput video-phenotyping

Developing and providing facilities and expertise for video-phenotyping

Experimental designs

Cameras

Telecom Valley | SOFAB

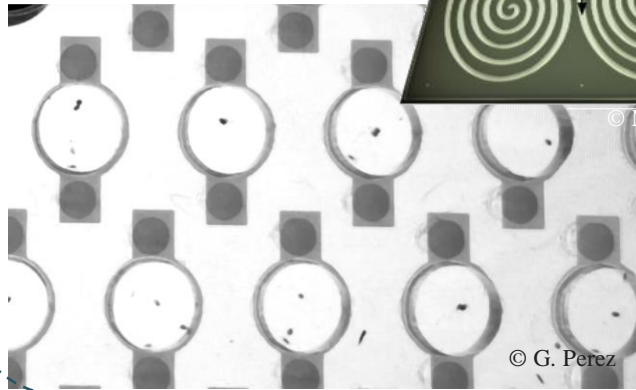


# ➤ A platform for high-throughput video-phenotyping

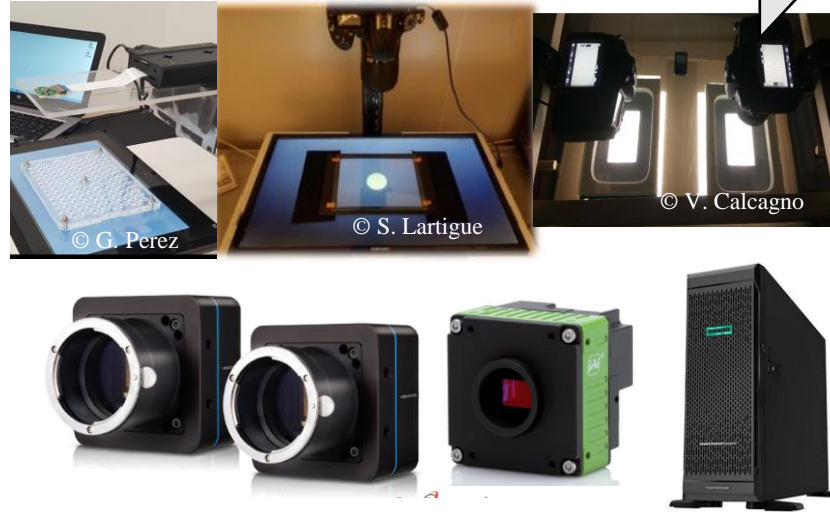
Developing and providing facilities and expertise for video-phenotyping

Experimental designs

Telecom Valley | SOFAB

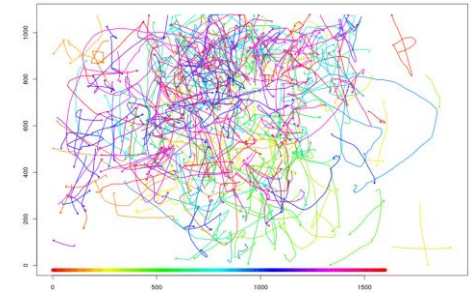


Cameras

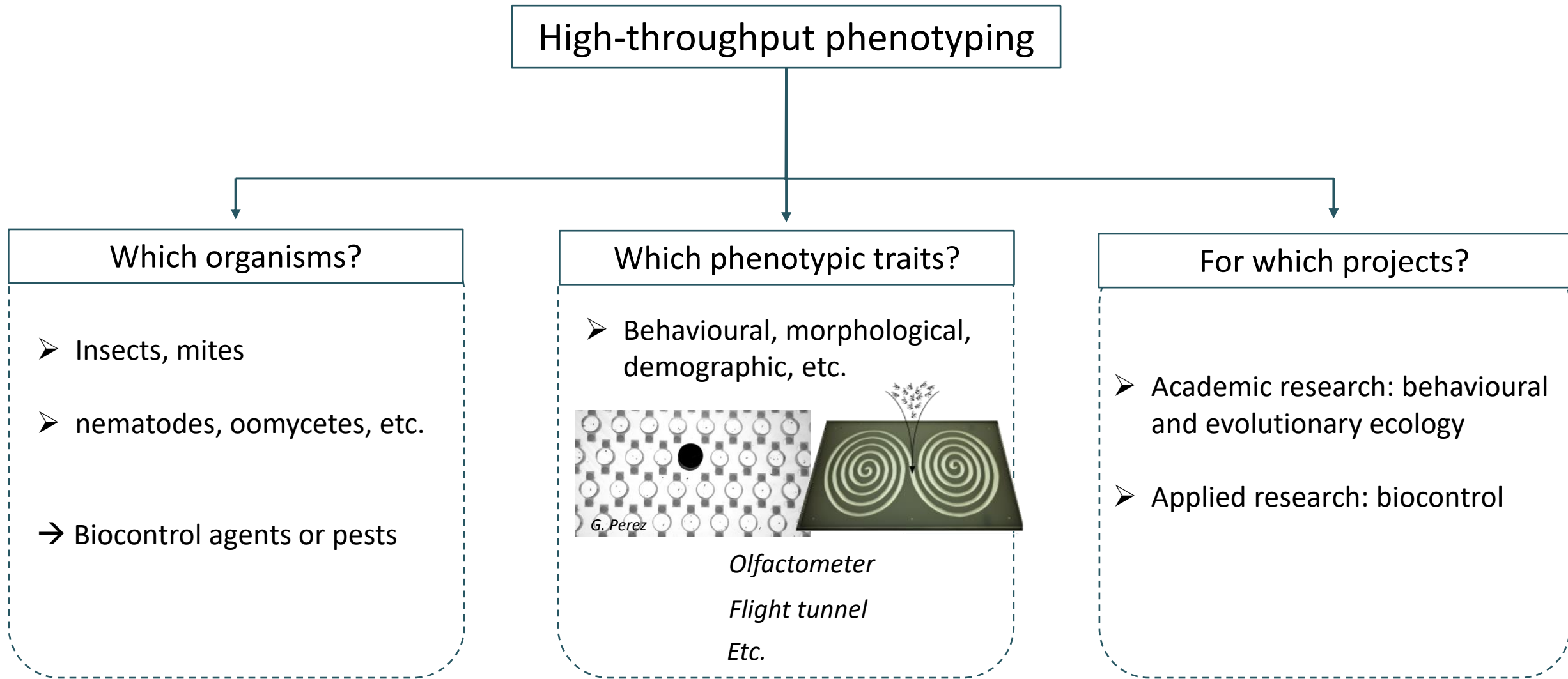


Analysis techniques

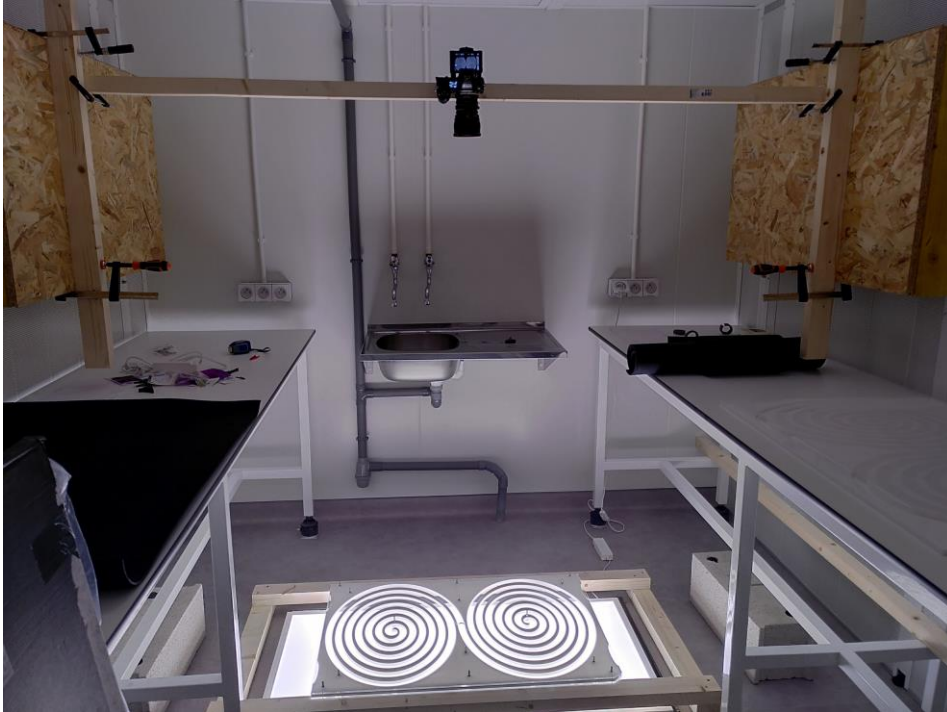
TRex



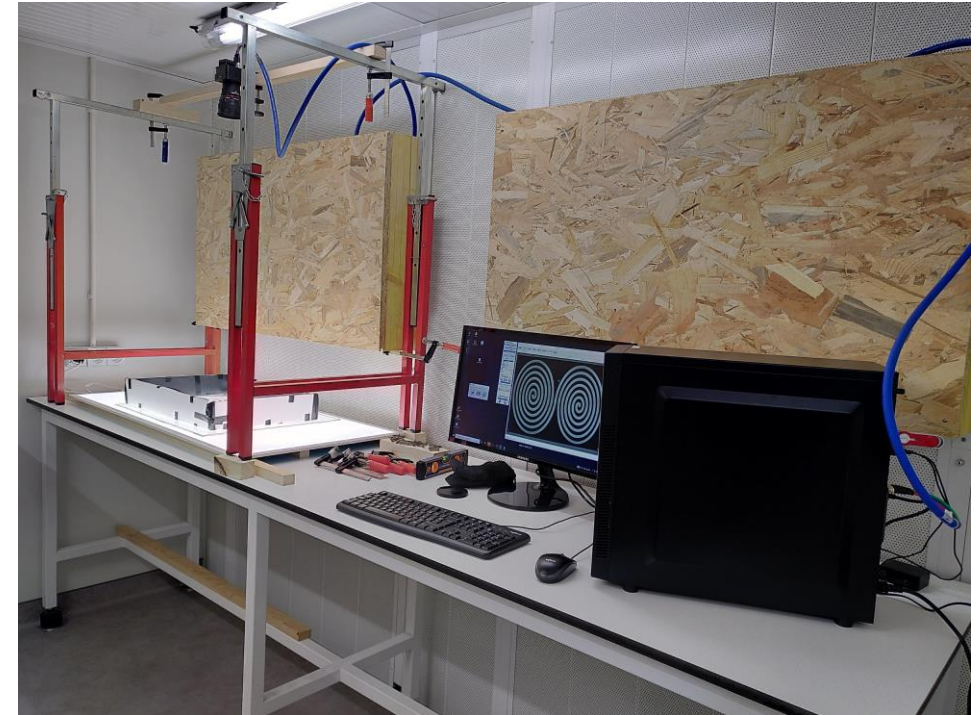
# ➤ A platform for high-throughput video-phenotyping



## ➤ A platform for high-throughput video-phenotyping



*Trissolcus*  
A. Bout



*Trichogramma*  
V. Calcagno

Thank you!



**INRAE**

Platform for video-phenotyping (PVP) - ISC PlantBIOS, Institut Sophia Agrobiotech

14/12/2022

[silene.lartigue@inrae.fr](mailto:silene.lartigue@inrae.fr)